



CHARTING THE FUTURE

MnSCU's commitment to student success

Where are we now? This is a defining moment for us. Just when Minnesota needs our colleges and universities more than ever before, we are facing significant challenges that threaten our ability to make good on our core commitments. By the end of the decade, 3 out of 4 careers in Minnesota will require some education beyond high school, but currently, we are not on track to meet the demand.

Where do we need to be? We need to work more collaboratively with greater transparency and dialogue to continue producing the best educated and most talented graduates. Charting the Future is an effort to provide an opportunity for all Minnesotans to create a better future for themselves, for their families, and for their communities.

Charting the Future supports the MnSCU strategic framework

- Ensure access to an extraordinary education for all Minnesotans
- Be the partner of choice to meet Minnesota's workforce and community needs
- Deliver the highest value/most affordable higher education option

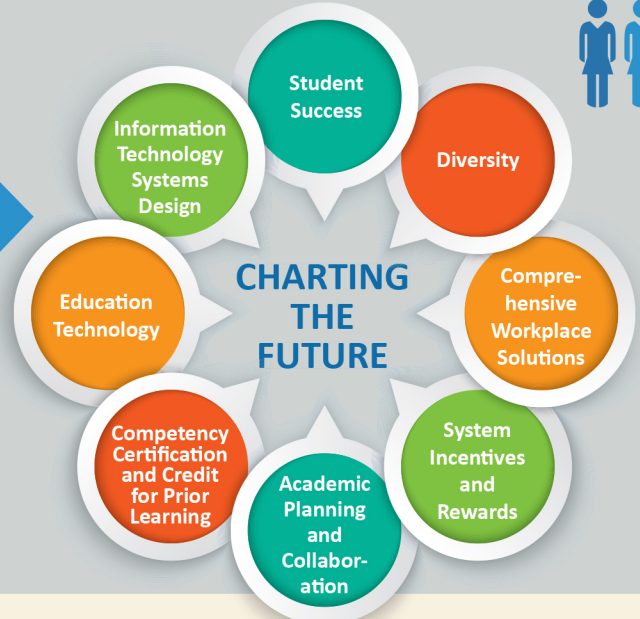
How are we going to get there?



Students, faculty, and staff helped craft 6 recommendations to meet our goals

1. **Dramatically increase the success of all learners**, especially those in diverse populations traditionally underserved by higher education
2. **Develop a collaborative and coordinated academic planning process** that advances affordability, transferability, and access to our programs and services across the state
3. **Certify student competencies and capabilities**, expand pathways to accelerate degree completion through credit for prior learning, and foster the award of competency based credits and degrees
4. **Expand the innovative use of technology** to deliver high quality online courses, strengthen classroom instruction and student services, and provide more individualized learning and advising
5. **Work together under new models to be the preferred provider of comprehensive workplace solutions** through programs and services that build employee skills and solve real-world problems for communities and businesses across the state
6. **Redesign our financial and administrative models** to reward collaboration, drive efficiencies and strengthen our ability to provide access to an extraordinary education for all Minnesotans.

Students, faculty, and staff will help lead the work translating the recommendations into specific actions on 8 campus-led implementation teams



To learn more, visit: www.mnscu.edu/chartingthefuture To share your ideas, questions, concerns, and stories, email: MyIdeas@so.mnscu.edu
Doing nothing is not an option. We need to do things differently. We need to build a better future for all of Minnesota.

To join the dialogue, tweet @MnSCU #ChartingTheFuture