



# Minnesota State College Southeast

A student-first approach that creates a culture of caring helps individuals achieve their dreams at Minnesota State College Southeast. Faculty, who get to know students on a personal level, enhance learning experiences in and out of the classroom. To reduce barriers to attendance, students can choose to attend class in person or online. Several unique options, including musical instrument repair, mechatronics, and bicycle design and fabrication, are among the many programs of study students can pursue. Upgraded with local community and business support, the college's manufacturing and transportation labs are designed to prepare students for success in the modern workplace.

## Contributing to the Minnesota Economy

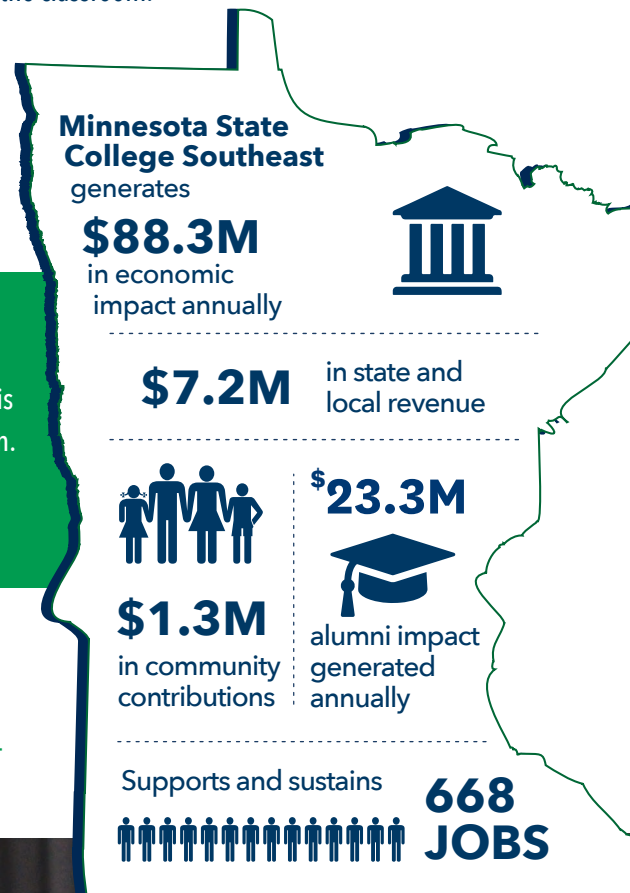
- Minnesota State College Southeast generates an annual impact of **\$88.3 million**. This includes a direct impact of \$51.3 million and an indirect/induced impact of \$37 million.
- Spending on operations and capital projects generates **\$32.4 million** of the total impact, and student and visitor spending generates **\$55.9 million**.

## Supporting and Sustaining Jobs in the State

- Minnesota State College Southeast supports and sustains **668 Minnesota jobs** (477 direct and 191 indirect/induced). These jobs are at the college and in the community - 123 direct jobs are employees of Minnesota State College Southeast.

## Generating Local and State Tax Revenue

- The combined tax impact of Minnesota State College Southeast, its suppliers, students and visitors is \$7.2 million. This includes a direct impact of \$5 million and indirect/induced impact of \$2.2 million.



## Alumni in the State Generate Additional Impact

An estimated 6,312 Minnesota State College Southeast alumni living and working in Minnesota are continuing to make a positive economic impact after graduation. These graduates are an integral part of the Minnesota workforce, impacting the economy not only through their spending but also through the extra earning power generated by their Minnesota State College Southeast degree.

Each year, Minnesota State College Southeast alumni generate \$23.3 million in economic impact for Minnesota and support and sustain 124 jobs. Over their 40-year career, Minnesota State College Southeast alumni will generate \$931.3 million in the economy. These impacts are based on the added value of earning a degree from Minnesota State College Southeast, not alumni full wages. This impact is based upon the total number of alumni in Minnesota 10 years after graduation.

## Making a Difference in the Community and State

Minnesota State College Southeast students and their faculty make a difference in the communities of Winona and Red Wing in many ways. Just a few

examples: Working with Habitat for Humanity - Serving Winona County, Construction Technology students assisted in several renovation projects and built a new home for a Habitat partner family. In Red Wing, musical instrument repair program students share their remarkable talents with the public at the annual *Strings, Winds & Brass* concert and the Student Guitar and Violin Show.

Through partnerships with Workforce Development, Inc. and CareerForce, the college provides short-term programs for adults targeted to groups that have barriers to employment, teaching trade and technical skills that help meet the region's seemingly endless need for a skilled workforce.

These contributions to the community, and many more, extend Minnesota State College Southeast's culture of caring across the Southeast Minnesota region.



## Minnesota State College Southeast Student Profile



**2,502**  
students enrolled in fall 2022



**448**  
graduates each year



**32.1%**  
Pell recipients



**15.5%**  
first-generation students  
attending university



**1:16**  
16 students per  
full time faculty member



**108**  
students currently enrolled  
are veterans

An estimated **\$1,258,501** in charitable donations and volunteer services are generated annually by faculty, staff, and students.

- **\$159,476** donated to local charitable organizations by faculty, staff, and students.
- **\$1,099,025** of volunteer time by faculty, staff, and students.

MINNESOTA STATE COLLEGE  
**SOUTHEAST**  
A TECHNICAL & COMMUNITY COLLEGE



MINNESOTA STATE



prepared by *Parker Phillips*  
ANALYSIS ASSOCIATES  
January 2023

ACCESS THE FULL REPORT [MINNSTATE.EDU/IMPACT](http://MINNSTATE.EDU/IMPACT)